

40th Street & Shellmound Avenue Bridge Enhancements

Emeryville, CA



FTS developed urban design treatments for a new 40th Street / Shellmound Avenue bridge structure connecting Emeryville's East Bay Bridge Center with Bay Street, Powell Street Plaza, and Emeryville Public Market. Its prominent location next to the Bay Bridge/I-80/I-580/I-880 interchange suggested that instead of standard DOT-styled barrier railings and lighting, a design that projected the creative identity of Emeryville could be developed. The resulting human-scaled diagonal fence struts and modern light fixtures were inspired by Emeryville's mix of industrial buildings and artists' lofts.



An exterior view of the 40th Street overcrossing's bridge railing and pier-mounted bridge lighting.

BEFORE

- The proposed bridge location would be prominently in view of thousands of Bay Bridge and freeway commuters and future shoppers.



Aerial view of 40th St. & Shellmound Ave. overcrossing with nearby I-80 and I-580 connectors to the Bay Bridge, Amtrak tracks, IKEA parking structure, and Target store.

ASSIGNMENT

- Develop a distinctive place-inspired treatment for bridge railings and lighting, visible to passing freeway commuters as well as motorists and pedestrians on the bridge itself.
- Integrate bridge lighting design into the railing design as well as surrounding streetscapes.
- Work with bridge structural engineers to ensure constructability and code compliance.

OUTCOMES

- Bridge construction was completed in 1996.

RECOGNITIONS

- 1996 Excellence in Transportation Award from the California Department of Transportation (Caltrans)
- 1996 Concrete Construction Award from the American Concrete Institute, Northern California and Western Nevada Chapter

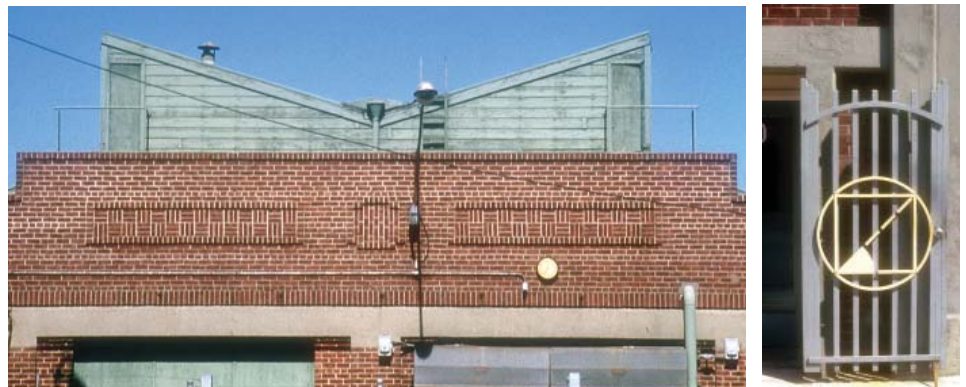
CLIENT: City of Emeryville, CA

IN COLLABORATION WITH: Mark Thomas & Co., Inc.

FTB: When this project was completed the firm name was Freedman Tung & Bottomley (FTB).



A detailed view of the bridge railing with its diagonal struts and pier-mounted modern lighting fixture.



Emeryville's mix of historic industrial architecture and artist-created elements served as sources of form.