

# Thammasat University Station District Master Plan

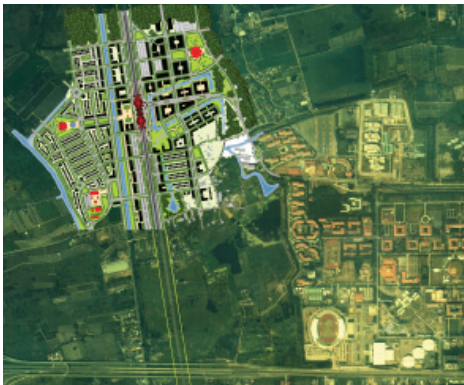
The Red Line Transit Corridor, Bangkok and Prathumtani, Thailand



To kick-start investment in transit-oriented development instead of customary suburban sprawl, the master plan for Thammasat University Station District employs standard Thai building types and architectural features appropriate to the region's hot, wet climate – showcasing the familiarity and appeal of walkable, compact, and complete neighborhoods. The urban design strategy leverages the new transit service and the station's proximity to universities and other centers of innovation-related employment, in order to attract investment in a lively new sub-urban center that provides settings for interaction and idea exchange. The transportation planning strategy is to instigate the development of a satellite town at the terminus of the commuter rail line and foster bi-directional transit usage.



**District Master Plan (above).** The mixed use district orbits around the train station and a main street that extends eastward from the station toward Thammasat University. District quadrants are composed of residential and employment neighborhood sub-areas that center on civic spaces and civic buildings.



**Envisioned TOD District Shown in Context.** Aerial photo shows Thammasat University at the lower right and Thailand Science Park immediately to the east of the new district.



**The Station Frontage (university side).** At the terminus of Main Street, transit riders are provided with a waterfront esplanade, bridge connections to and from the station, and convenient connections to bus, para-transit, taxi and bicycle parking.

## ASSIGNMENT

- Plan the station, its frontage, and surrounding property for the planned terminus station of Bangkok's first new commuter rail service.

**CLIENT:** The Office of Transport Policy and Planning, Thai Ministry of Transport.

**IN COLLABORATION WITH:** This master plan is one element of the project completed by the Thammasat University Project Team under the leadership of Dr. Pawinee lamtrakul, and as subcontractors to Chotchinda Mouchel Consultants Limited.

**FTS:** This portion of the project was prepared by Michael Freedman in his capacity as Visiting International Professor of Urban Design at Thammasat University as part of Mr. Freedman's teaching sabbatical in 2009 – 2010.



**Land Use & Development.** Density and mix increase and block size decreases as one approaches the station. A connected green network of canals, wetlands, natural corridors and parks define neighborhood areas.



**Street Hierarchy.** In lieu of the usual single large arterial, vehicular circulation is served by a network of through-streets that form the framework for development of the new district. All streets in the hierarchy are designed to accommodate pedestrians, bicyclists, transit-riders and motorists.